

IR  
FLEXCAM<sup>®</sup>  
R2

## PORTABLE INFRARED CAMERA WITH SMARTVIEW™

**FULL  
TEMPERATURE  
MEASUREMENT**

The IR FlexCam<sup>®</sup> R2, configured specifically for the building sciences industry, is an extremely affordable and easy to use portable, video rate infrared imaging camera that provides precision temperature measurements. The **Sharper Simpler Smarter™** design features make it an ideal camera for fast and easy infrared inspection.



# SHARPER SIMPLER SMARTER

## SHARPER

- 5" high-resolution, sunlight readable color LCD
- Highly sensitive detector produces exceptionally clear and crisp video images
- Eight different color palettes enhance versatility of the image on the large display
- 180-degree articulating lens joint
- Image Enhancement Package
- Visible color alarms
- Interchangeable lenses

## SIMPLER

- Exceptionally easy to use
- Intuitive operation with on-camera Windows<sup>®</sup> CE interface
- Easy to navigate menu structure
- Mouse-pointer with left and right mouse button allows for user familiarity
- On screen annotations
- **New** SmartView professional analysis and report writing software (at no additional cost)



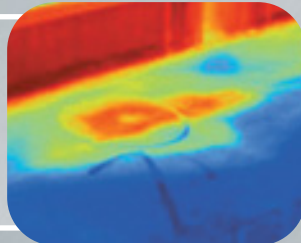
## SMARTER

- Temperature range from -20°C to 100°C (-4°F to 212°F)
- Freeze, Save, Open and Delete images on-camera
- Programmable buttons allow for access to frequently used commands
- Ergonomically efficient design facilitates scanning of awkwardly positioned targets and reduces user fatigue
- Battery charge capacity gauge
- User specified shutdown and sleep modes increase battery and camera life

## APPLICATIONS

### Energy Audits

Perform infrared energy audits for residential and commercial applications. Increase the thermal efficiency of a home or building by scanning for thermal heat loss, moisture invasion, concrete integrity and heat ventilation problems.



MISSING INSULATION

### Roofing Survey

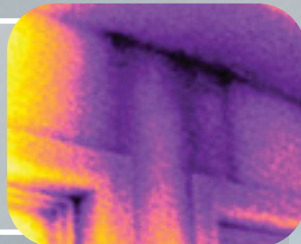
Detect water-saturated insulation in flat-roof systems quickly and efficiently. Find damaged portions of the roofing structure so that they can be repaired or replaced before the entire roof is contaminated.



MOISTURE DAMAGE

### Moisture/Restoration

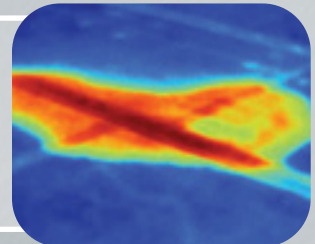
Accurately detect and prove moisture issues located behind interior walls, in ceilings or under carpet-covered floors have been completely resolved.



WALL MOISTURE

### Mold Remediation

Control mold by detecting unknown sources of moisture that would otherwise go undetected. Infrared scanning is the only way to provide 100% moisture detection coverage.



CEILING MOISTURE

### Infrared Solutions, Inc.

3550 ANNAPOLIS LANE NORTH SUITE 70

PLYMOUTH MN 55447 USA

T 800 760 4523 F (763) 551 0038

WWW.INFRAREDSOLUTIONS.COM

**INSPECTORTOOLS**  
INNOVATIVE SOLUTIONS FOR TODAY'S INSPECTOR

# IR FLEXCAM® R2 PORTABLE INFRARED SYSTEM SPECIFICATIONS



Imaging Performance	
Detector	Focal Plane Array (FPA), Vanadium Oxide (VO <sub>x</sub> ) Uncooled Microbolometer
Spectral Band	8µm to 14µm
Thermal Sensitivity @ 30Hz	≤ 0.070°C at 30°C
Focusing	Single Finger Manual Focus
Electronic Zoom	2X
Digital Image Enhancement	Automatic Full-time Enhanced
Display and Image Storage	
Digital Display	5" high-resolution, 320 x 240, sunlight readable color LCD
On-screen Indicators	Indicate status of battery, target emissivity, background temp and real-time clock
Palettes	8 unique palettes available
Storage Medium	Compact Flash Card
Camera File Format	14 bit measurement is2 data file
Set-up Controls	Date/time, Temperature units C/F, Language, Scale, LCD intensity (high/normal/low)
Image Controls	One button Level, Span, Auto Adjust (continuous/manual)
Text Annotation of Images	User definable, automatically included in reports
Programmable Image Capture	Program camera to automatically capture thermal images
Temperature Measurement	
Calibrated Temperature Range	-20°C to 100°C (-4°F to 212°F)
Accuracy	±2°C or ±2%
Measurement Modes	Movable point, centerpoint, center box (area min/max, average), automatic hot and cold point detection, isotherm, color alarm above and below.
Emissivity/Background Correction	Based on user input.
Standard Optics	
20mm f/0.8 Germanium	Field of view: 23° Horizontal x 17° Vertical (optional lenses available)
Spatial Resolution (IFOV)	2.6 mrad IFOV, 0.15m minimum focus
Power	
Battery Type	Li-Ion Smart Battery, rechargeable, field-replaceable
Battery Operating Time	3 hours continuous operation
Battery Charging	2 bay intelligent charger powered via AC outlet or 12v from car (optional)
Power Saving	Automatic shutdown and sleep modes (user specified)
Interfaces	
Video Output	RS170 EIA/NTSC or CCIR/PAL composite video
Physical Characteristics	
Weight	1.95kg (4.3lbs) including battery
Size	69mm x 262mm x 162mm (2.75" x 10.5" x 6.5") camera only
Tripod Mounting	1/4" – 20 UNC
Environmental	
Operating Temperature	-10°C to +50°C (14°F to 122°F)
Storage Temperature	-40°C to +70°C (-40°F to 158°F)
Humidity	Operating and storage 10% to 95%, non-condensing
Shock / Vibration	25G, IEC 68-2-29 / 3G, IEC 68-2-6
Encapsulation	IP54, IEC 60529
Transit Drop	MIL-STD-810F, Method 516.5, Procedure IV
Agency Approvals	CE Approved (EN61326 Standard)
Warranty	
Term	12-month warranty included; extended options available

Standard Equipment			
IR Camera with 20mm f/0.8 lens	SmartView™ Software	Heavy Duty Carrying Case	Operation Manual
Compact Flash Card	Shoulder Strap	Battery Charger	Video Cable
USB Card Reader	2 Rechargeable Batteries		PCMCIA Adapter
Optional Equipment			
	10.5 mm Lens (42°H x 32°V), 4.9 mrad IFOV, 0.3m min Focus	12v Power Cable Car Charger	Laser Pointer
		120v AC Adapter	Extra Batteries
			Sun Shield